

CAN ONE TRACTOR DO IT ALL? ABSOLUT(ELY).

THE NEW STEYR ABSOLUT CVT WITH UP TO 271HP.



STEYR
TRAKTOREN

Your partner to rely on.

THE ULTIMATE WORK HORSE.

The STEYR Absolut CVT doesn't do things by halves. It delivers maximum performance - no matter where you go with it.

Whether on the road for heavy transport work, when sowing in the field or when mowing endless fields - with its powerful six-cylinder with up to 271hp and HI-eSCR2 engine technology, the innovative S-Control™ CVT transmission and S-TECH precision farming, the STEYR Absolut CVT always delivers the ultimate performance.

And it also looks damn good.



10 - 11

ENGINE

12 - 13

TRANSMISSION

14 - 15

**FRONT
LINKAGE
AREA**

16 - 17

**REAR
LINKAGE
AREA**

20 - 25

CAB

28 - 29

DRIVELINE

30 - 31

SAFETY

34 - 39

S-TECH

42 - 43

**ABOUT
STEYR**

44 - 45

**SUSTAINA-
BILITY**

46 - 47

**STEYR
SERVICE**

48 - 49

**MAINTAIN-
ANCE**

ABSOLUT(ELY) THE BEST. IN EVERY ASPECT.



Low noise level of 69dB(A) for stress-free operation and for using the telephone.



Up to 20 LED-worklights for perfect 360° illumination.



Ergonomic operation using the Multicontroller armrest.



PowerPlus for up to 45hp more power.



S-Control™ CVT: continuously variable transmission with ultimate mechanical efficiency rating.



50kph achieved at a fuel-efficient 1,550rpm.



Maximum rear lift capacity of up to 10,463kg and 5,129kg at the front.



ABS and patented trailer brake system S-Brake represents a major advance in tractor safety for the driver.



QuickTurn II full wheel lock at minimum steering movement.



Dual-Motion driver seat, pneumatic cab suspension and active front axle suspension for more comfort.



Powerful, efficient and ecological: the 6-Cylinder engines from 180 up to 271hp fulfill the Stage V emission standard.



S-TRONIC has been further advanced and offers customizable control features.



Active hold control for stopping on a steep slope without a brake.



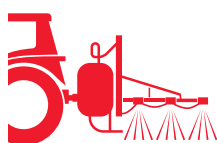
Headland management Easy-Tronic II for the automation of work operations, dependent on time and distance covered.



Four rear PTO speeds with Power mode or with the fuel-efficient speed of the ECO mode.



The latest IF and VF tyre technology is available for your Absolut CVT.



The Absolut CVT supports ISOBUS II and ISOBUS III.



S-TECH Precision farming: fully automatic turning with S-GUIDE and S-TURN II.

ABSOLUT(ELY) ALL INCLUSIVE.

Well equipped.

Your Absolut CVT is available in three equipment configurations for convenience. Custom, for the a la carte approach, and Evolution and Excellence that configure the best Absolut CVT options conveniently. You can quickly select the features that matter to you.

The equipment packages can be changed by STEYR without prior notification. Please contact your local dealer for the latest configuration.



EVOLUTION

Evolution in comfort and performance for the customers.

The front linkage is a standard feature with Evolution and allows you to; quickly add and remove ballast and for further productivity, add an additional mounted implement.

Facts

- ▶ Electrohydraulic remotes and 154l/min CCLS hydraulic pump (173l/min optional)
- ▶ 4 speed PTO
- ▶ Pneumatic cab suspension optional
- ▶ Active front axle suspension



- ▶ Front linkage as standard (Front linkage + PTO optional)
- ▶ Optional Easy Tronic II (advanced headland management) on S-TECH 700
- ▶ STEYR S-GUIDE ready optional
- ▶ ISOBUS Class II optional



Facts

- ▶ Electrohydraulic remotes and 173l/min CCLS hydraulic pump
- ▶ 4 speed PTO
- ▶ STEYR pneumatic cab suspension as standard
- ▶ Active front axle suspension
- ▶ Front linkage with front hitch management

EXCELLENCE

High-end performance and superior operator comfort features.

The STEYR pneumatic cab suspension is standard with Excellence and delivers a premium comfort experience. Fatigue is reduced during long days in the field and on the road.

- (front linkage with front hitch management + PTO optional)
- ▶ Rear hydraulic top link
- ▶ Easy Tronic II (advanced headland management) standard on S-TECH 700
- ▶ STEYR S-GUIDE ready as standard
- ▶ ISOBUS Class II or III



CAN YOU BUY LOYALTY? ABSOLUT(ELY).

 Reliable technology.



ABSOLUTE TOP PERFORMANCE.



Facts

- ▶ 6-cylinder engines with turbocharger and intercooler
- ▶ 6.7 litre cubic capacity
- ▶ Rated power output: 180-241hp
Max. power output with PowerPlus: 224-271hp
- ▶ High maximum torque with up to 1,160Nm
- ▶ HI-eSCR2 technology from FPT fullfil Stage V
- ▶ S-TRONIC engine and transmission management
- ▶ Engine is fully compatible with hydro-treated vegetable oil, or HVO (bio-synthetic diesel)
- ▶ Up to 46% torque increase
- ▶ Extended engine service intervals (750 hours)
- ▶ Reversible fan
- ▶ Engine exhaust brake
- ▶ 390-litre fuel tank to help maximise the working day

**6.7 litre
turbodiesel**

Tried and tested FPT Industrial 6-cylinder NEF 6.7 litre engines work away under the bonnet of the STEYR Absolut CVT, with a nominal output of 180 to 241hp. With PowerPlus each model produces up to 45hp additional power and easily meets the requirements of the Stage V EU emissions standard thanks to the patented HI-eSCR2 aftertreatment system.



TRUST IS GOOD. S-TRONIC IS BETTER.



S-TRONIC custom settings:

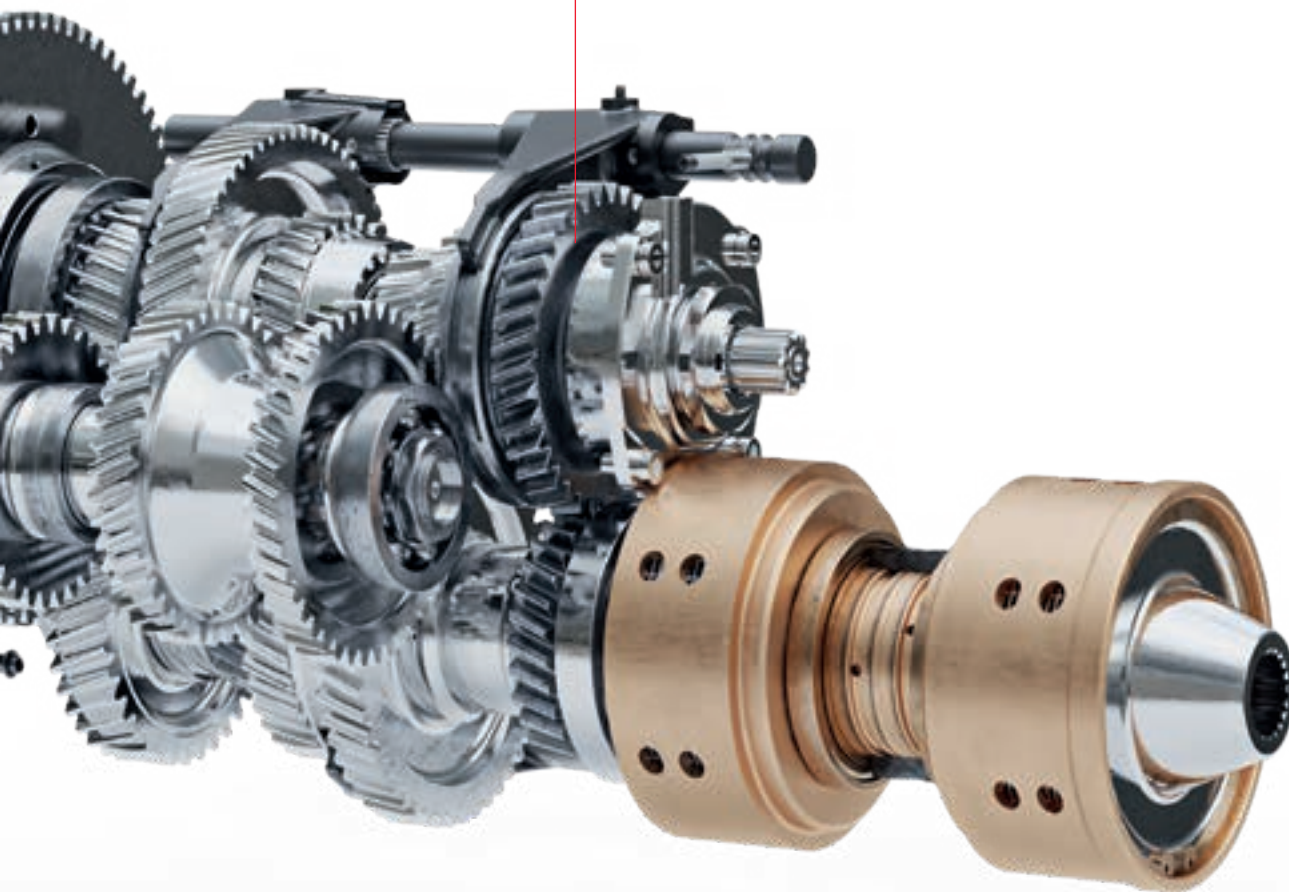
Individually set-up your S-Control™ CVT transmission settings according to your operation.

Facts

- ▶ Stepless from 0 to 50kph
- ▶ 40 or 50kph at reduced engine revs
- ▶ Four points of 100% mechanical efficiency
- ▶ Active hold control
- ▶ DKT - Double clutch technology
- ▶ Kick-down functionality
- ▶ S-TRONIC engine and transmission management
- ▶ CVT custom dynamics
 - Acceleration / deceleration
 - Shuttling Speed
 - Drive pedal behavior
 - Engine torque response

**S-Control™ CVT
transmission**

Maximum torque with minimum fuel consumption, electronic control that permits even faster changes in direction and active stationary control to stop safely on a steep gradient: the continuously variable S-Control™ CVT transmission is a leader in comfort and efficiency.



Fully integrated.

The STEYR front linkage has a lift capacity of 5,129kg for the biggest of front mounted implements. The 1,000 speed PTO option is achieved at an engine rpm of 1,895, the optimum range for power and efficiency.

Attaching an implement is made safer and easier via easy-to-access remote hitch switches, and the optional camera provides an in cab view of the implement at work.

Front linkage

- ▶ 5,129kg maximum lift capacity
- ▶ Seven-pin lighting and 40-A plug sockets fitted standard
- ▶ Remote operating switches for hitch operation to aid safe hitching



Better view:

The STEYR Absolut CVT front camera is mounted directly above the front linkage and provides a wide degree of vision.



Front PTO

- ▶ Perfect integrated 1,000rpm front PTO
- ▶ Front PTO-Management
- ▶ Progressive soft start
- ▶ Electrohydraulic engagement under load

Always in good hands.

The loadsensing hydraulic system of the Absolut CVT is based on an axial piston variable displacement pump with an oil delivery rate of up to 173l/min. Up to 8 independent consumers can be supplied with oil at the same time. The delivery rate and duration can be set individually for each electrical remote valve. This guarantees an excellent response behavior for all connected implements. Top links are by their nature heavy - connecting implements is easier with an improved top link fixing for better stability while a position indicator allows the operator to check from the seat. The rear PTO is available with two or four speeds.

Rear hitch

- ▶ Up to 10,463kg lifting capacity
- ▶ Improved top link fixing for better stability & position indicator
- ▶ CCLS hydraulic system with up to 173l/min pump capacity
- ▶ Electronic hitch regulation (EHR)
- ▶ Ride Control – dynamic vibration damping
- ▶ Up to eight electrical remote valves (five on the rear, three centrally mounted)
- ▶ Power-Beyond connection



Easy to reach:

External controls on both fenders for easy implement connection.



Rear PTO

- ▶ Electrohydraulic engagement under load
- ▶ PTO-Management
- ▶ Progressive soft start
- ▶ External controls on both rear fenders
- ▶ PTO-speeds:
540E/1,000 or 1,000/1,000E or
540/540E/1,000/1,000E

CAN HARD WORK BE EASY? ABSOLUT(ELY).

 The STEYR comfort cab.







Absolut Comfort.

The slimline bonnet provides optimum visibility over the front working area. Also at the rear, for effortless attachment of implements, the Absolut CVT provides clear visibility of the coupling points. With the large, electrically adjustable and heated telescopic mirrors with wide-angle insert, you can even keep an eye on wide attachments. An additional window in the roof provides unobstructed visibility of the front loader. A new low mounted wiper increases the swept coverage area by 60% compared to previous models.



Really good looking. At day and night.

Perfect and unrestricted all round visibility - thanks to the 4-pillar panorama cab with its large windows, high-visibility roof window and one-piece front windscreen. The LED work light package assures superlative visibility even after night has fallen. Standard equipment comprises 6 LED work lights at the front of the roof, another 6 at the back of the roof, and 4 more LED work lights on the bonnet. An optional 4 LED work lights, one fitted low on each cab pillar, front and rear, are also available. The light intensity of 2,000 lumens per LED headlight turn night into day and ensure accurate, efficient work.

Facts

- ▶ 4-pillar-cab
- ▶ High-visibility roof window
- ▶ Sun roller blind on front and rear windscreen
- ▶ Up to 20 powerful LED worklights
- ▶ Front mounted camera for improved visibility when working with implements





The perfect working place.

The Absolut CVT cab offers a working area you can rely upon fully in all situations: A low noise level of only 69dB(A), ergonomic seating and steering wheel adjustments, finely adjustable air conditioning and our premium pneumatic cab suspension, active front axle and Dual-Motion driver seat assure maximum comfort.

Facts

- ▶ Low noise level of just 69dB(A)
- ▶ Mechanical or pneumatic cab suspension
- ▶ Air condition or automatic climate control
- ▶ DAB-Radio with premium-loudspeaker
- ▶ Handsfree microphone
- ▶ Tablet and mobile mount with power sockets
- ▶ Cool box & storage



Deluxe

- ▶ Dual-Motion driver seat with dynamic damping system
- ▶ Seat heating
- ▶ Swivel-mounted headrest
- ▶ Active carbon inserts to control humidity
- ▶ Leather steering wheel
- ▶ Carpet



Active Luxury

Difference compared to Deluxe

- ▶ Maximo-Evolution-leather driver seat
- ▶ Seat cooling
- ▶ Active-suspension with automatic adjustment
- ▶ Leather co-driver seat

Well served.

In the comfortable Absolut CVT cockpit, you are in control. At the centre of the STEYR Multicontroller armrest is the Intuitive Control Panel, a smart layout of key Absolut CVT features that allows all drivers to get the best from the machine.





Quick access menu

12 freely programmable short cut menus allow quick access to key Absolut CVT functions on the S-TECH 700 monitor. Simple to access and even more convenient to set-up.



Free configurable

The STEYR Multicontroller handle features reconfigurable buttons that can be assigned via the S-TECH 700 monitor. This allows you to control more of the Absolut CVT and ISOBUS functions ergonomically in one hand.

Multicontroller armrest

- ▶ S-TECH 700: the integrated touchscreen colour monitor
- ▶ Ergonomic operation with Multicontroller
- ▶ Joystick and levers to control remote valves on front and rear
- ▶ Front and rear PTO switches
- ▶ ICP - Intuitive Control Panel
- ▶ ECO-Drive™ levers
- ▶ Hydraulic settings
- ▶ ISOBUS Aux-N



**IS THERE SOMEONE
WHO CAN DO ALL?
ABSOLUT(ELY).**

Work with the Absolut CVT.





Perfect traction.

With an excellent power-to-weight ratio and a high maximum permissible weight, STEYR Absolut CVT tractors are strong in the field and on the road. The perfect interaction of all components ensures a unique driving experience of a new generation.

Active front axle suspension

Ensures more comfort,
better traction and safety.



Wide trailer carriage

Makes it easier to connect up the universal shaft to the PTO stub shaft.

**Automatic trailer drawbar**

The towbar coupling is opened by remote control from the cab.

**K80 ball-head coupling**

Ideal for heavy-duty trailer operation.

**Facts**

- ▶ Automatic 4WD- and differential lock management
- ▶ Active front axle suspension
- ▶ Various trailer fixtures for different transport operations.
- ▶ Tyre and rim combinations for every application.



Absolut safe.

The modern way of driving a tractor. The Absolut CVT series offers the most complete braking system on the market with ABS and S-Brake trailer braking systems.

All models are equipped with wet dual disc brakes (4 disc brakes on the rear axle). The more wear-resistant HD brake discs offer a longer service life, especially in heavy transport. The perfect interaction of all components ensures a unique driving experience of a new generation.

Patented trailer brake system.

With S-Brake, the advanced trailer braking system, you remain confident even in difficult situations. The patented system actively recognizes the current driving situation and stabilizes the combination when braking. The tractor and trailer stay in line.

Without S-Brake advanced trailer brake system



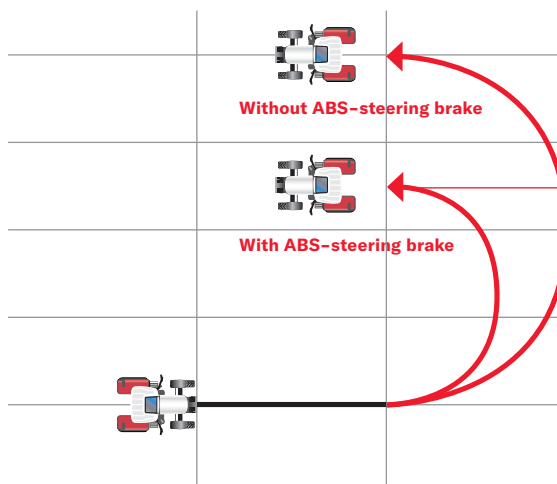
With S-Brake advanced trailer brake system





Facts

- ▶ All-wheel and 4-wheel brake
- ▶ Electronic parking brake
- ▶ S-Brake trailer braking system
- ▶ ABS anti-lock braking system
- ▶ Automatic ABS steering brake
- ▶ CTIS - Central tyre inflation optional



The automatic ABS steering brake takes care of your reduced radius.

IS THERE SOMEONE, ALWAYS ON TRACK? ABSOLUT(ELY)

 S-TECH Precision Farming





Work more efficiently with STEYR S-TECH.

The right thing for professional farmers and agricultural businesses, because GPS, used in conjunction with the comprehensive coverage of the RTK⁺ network, provides precise positional navigation and steering. The system guarantees 100% network coverage and uses the revolutionary xFill technology to bridge signal losses lasting up to 20 minutes. That translates into field work with pass-to-pass accuracy of as little as 1.5 centimetres. That enables S-TECH to relieve driver workload while also reducing operating costs. Or to put it simply: S-TECH saves you time and money.



You are always on the right track with STEYR.

Track guidance, data management, integrated communication between implements and the tractor via ISOBUS and much more – the STEYR Absolut CVT doesn't only work hard, it also works precisely. This considerably increases productivity and profitability.

Facts

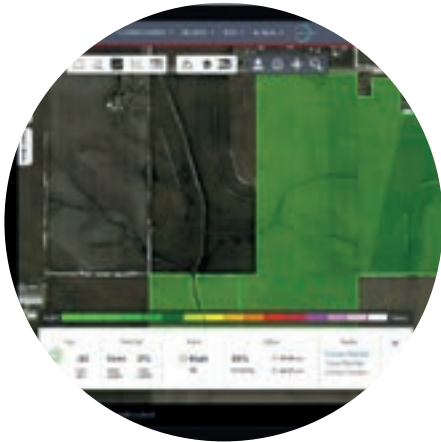
- ▶ Low cost RTX signal solution
- ▶ Optional high accuracy RTK* signal with accuracy levels close to 1.5cm
- ▶ xFill bridges RTK signal gaps of up to 20 minutes
- ▶ S-TECH 700 monitor with touchscreen
- ▶ ISOBUS II and ISOBUS III compatible
- ▶ S-GUIDE is an integrated automated steering system
- ▶ S-TURN II turns automatically at the end of a row



S-FLEET telematic solutions.

S-FLEET lets you remotely monitor and manage your farm, fleet and data, allowing you to optimise your performance, productivity and flexibility. Efficiently visualise your equipment with little to no idle time. With all the information at your fingertips, you can successfully manage your operations anytime, anywhere!





Keep an eye on your farm.

- ▶ Crop and weather monitoring
- ▶ Operation control in real time



Keep an eye on your fleet.

- ▶ Machine tracking and monitoring
- ▶ On-time notifications



Keep an eye on your data.

- ▶ Data sharing
- ▶ Connect with 3rd party partners



Keep an eye on everything.

Download the mySTEYR app and get access to S-FLEET.



Facts

- ▶ S-FLEET telematic solutions for maximum productivity
- ▶ User-friendly interface
- ▶ Time-saving management
- ▶ Data visualisation enhancing decision making
- ▶ Efficiently track your equipment's location & view machine parameters in real time
- ▶ mySTEYR is your destination for STEYR product support
- ▶ Solutions for mixed fleets
 - DataConnect
 - Agrirouter

Turn well. All good.

The Easy-Tronic II headland management system is designed to relieve the driver as much as possible when turning on the headland and doing many other control activities.

The S-TURN II technology in combination with Easy-Tronic II ensures complete automation of headland work. Steering processes, the turning radius, speed and control of the implements are automated and optimized at the headland.

This leads to greater efficiency and increased comfort.

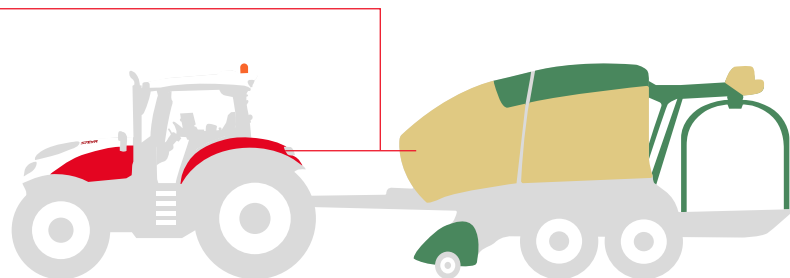
EASY-TRONIC II and S-TURN II

- ▶ Full automation of work sequences
- ▶ You can record and program while in operation or stationary
- ▶ Programming possible, dependent on time, distance and event initiation
- ▶ Calling up of sequences by Multicontroller, S-TECH 700 monitor or on the ICP
- ▶ S-TURN II turns automatically at the end of a tramline
- ▶ ISOBUS Class II- and III-compatibility

ISOBUS and Absolut CVT

You can control ISOBUS Class II and III implements through the S-TECH 700 monitor on the Absolut CVT - potentially saving the need for a second display in the cab.

With ISOBUS Class III, the implement can control certain Absolut CVT functions, such as forward speed and hydraulics for e.g., thereby maximizing productivity and ensuring a consistent workflow process during long seasonal days.







IS THERE A PARTNER
YOU CAN ALWAYS
RELY ON?
ABSOLUT(ELY).

 STEYR tractors



YOUR PARTNER TO RELY ON.

For more than 70 years, STEYR has been a synonym for innovation, reliability and stability. Not only in Austria, but also in many parts of Europe. Developed together with farmers, built by and for farmers, STEYR tractors have once again revolutionised local agriculture.

Our STEYR factory in St. Valentin, Austria, is one of the most modern development and production facilities for agricultural machinery world-wide. Here we work every day on new innovative concepts and technologies, in order to build tractors for today and for tomorrow that you can simply rely on.





PRIMARILY SUSTAINABLE.

Our tractors must meet the toughest demands, from the point of view both of our customers and the environment. These aims go hand in hand, as our efficient solutions not only help save time and fuel, but also get top marks regarding sustainability. This fact has already led our CNH Industrial Group nine times to the top of the Dow Jones Sustainability Index.

Environmentally friendly manufacturing.

For us, sustainability starts during production: Our CNH Industrial Group covers 56% of its power requirement with renewable energy and utilises more than 90% of the generated waste as well as approx. 30% of the waste water on site.

Efficient technologies.

With innovative systems, our precision agricultural technology S-TECH helps increase the productivity and comfort of our tractors and lowers emissions to a minimum.

Reliable know-how.

Our most valuable resources are our employees. Therefore values such as safety in the workplace through continuous training are very important for us.

Sustainable concepts.

For the further development of our tractors, we place an extra focus on environmentally-friendly technologies in order to keep fuel and energy consumption as low as possible.



ALWAYS THERE FOR YOU.

STEYR Service is the partner you can trust to get the best performance from your STEYR tractor. No matter what you need, STEYR Service is available 24/7.

Individual financing.

Together with CNH Industrial Capital, STEYR Service offers you tailor-made financing solutions as well as leasing and rental offers at fixed rates. Have a chat with your STEYR dealer about your requirements.

Original performance with original parts.

We work every day to make sure every spare part is available and delivered as quickly as possible. Thanks to our dealers' extremely well-managed stock, we can often deliver the same day or even right there and then, so you can quickly get back to the work that matters.

Product training courses.

In cooperation with your STEYR dealer, we regularly offer product training courses to help you make the most of your tractor and solutions including S-TECH.

Perfect all-around protection.

STEYR PROTECT manufacturer warranty coverage protects you from unexpected costs and increases the residual value of your STEYR tractor.

On-site service.

A service van with highly trained technicians does the maintenance and repair work on-site – at the farm or out on the field. If your tractor needs a bit more attention, your STEYR dealer will try to provide you with a replacement machine.

Something that you can depend upon.

STEYR service is always there for you – 24/7/365. Whatever you need, just call us on **0800 7839 7000**.



MAINTENANCE DON'T NEED A LOT OF TIME.

Maintenance work

1. Comfortable fuel tank filling
2. Watertank for a quick handwash
3. Checking of oil level and topping up without lifting the bonnet
4. Continuous cleaning via a Piclon filter ensures that the filter only needs to be maintained when the corresponding warning lamp lights up
5. Fast and simple cleaning of the radiator and air-conditioning system
6. Single-section bonnet supported by gas struts can be lifted into two positions (45°/90°) even with a front-mounted implement



Model	Transmission	Engine				
	S-Control™ CVT Continuously variable transmission Driving speed* 0-50kph ECO or 0-40kph ECO	Max. engine power ECE R120 ¹ PowerPlus ² [kW/hp]	Max. engine power ECE R120 ¹ [kW/hp]	Engine speed at max. engine power [rpm]	Max. torque with PowerPlus ² [Nm @ 1,500rpm]	Torque increase OECD Standard/ PowerPlus ² [%]
		Rated engine power ECE R120 ¹ PowerPlus ² [kW/hp]	Rated engine power ECE R120 ¹ [kW/hp]	Rated engine speed [rpm]	Max. torque [Nm @ 1,500rpm]	
6185 ABSOLUT CVT	■	165/224 159/216	147/200 132/180	1,800-1,900 2,200	940 840	46/44
6200 ABSOLUT CVT	■	180/245 174/237	162/220 147/200	1,800-1,900 2,200	1,035 930	46/44
6220 ABSOLUT CVT	■	191/260 185/252	177/241 162/220	1,800-1,900 2,200	1,100 1,000	42/44
6240 ABSOLUT CVT	■	199/271 191/260	192/261 177/241	1,800-1,900 2,200	1,160 1,100	44/40

Model	Hydraulics					
	EHR hitch control with dynamic vibration damping Ride Control	Max. pump flow rate with pressure/volume control, load Sensing 1: 154l/min 2: 173l/min	Max. operating pressure [bar]	Max. continuous lifting capacity [kg]	Remote valves rear, up to 5 can be configured electrical	centrally, up to 3 mounted electrical
6185 ABSOLUT CVT	■	1 / 2	210	10,463	□	□
6200 ABSOLUT CVT	■	1 / 2	210	10,463	□	□
6220 ABSOLUT CVT	■	1 / 2	210	10,463	□	□
6240 ABSOLUT CVT	■	1 / 2	215	10,463	□	□

Model	Brakes	Tyres	Weight
	ABS Anti-lock braking system	Maximum tyres⁴ front rear	Approximate shipping weight⁵ [kg] Permissible total weight [kg]
6185 ABSOLUT CVT	□	600/60R30 710/60R42	7,300 14,000
6200 ABSOLUT CVT	□	600/60R30 710/60R42	7,300 14,000
6220 ABSOLUT CVT	□	600/60R30 710/60R42	7,300 14,000
6240 ABSOLUT CVT	□	600/60R30 710/60R42	7,300 14,000

■ Standard □ Optional

PTO

Shiftable with progressive electro-hydraulic engagement with optional PTO management

Common rail diesel engine with HI-eSCR2 technology, 24 valves, turbocharger and intercooler, fulfills emission standards Stage V	Fuel tank Diesel/AdBlue [l]	PTO speeds [rpm]				Engine speeds [rpm]				PTO shaft type		Front PTO* 1,000 @ 1,895 engine speed [rpm]		
		1: 540E/1,000	2: 1,000/1,000E	3: 540/540E/1,000/1,000E		1: 1,569/1,893	2: 1,893/1,700	3: 1,931/1,598/1,912/1,583		1 3/8" 21-splines	1 3/8" 6-splines	1 3/4" 20-splines	<input type="checkbox"/>	<input type="checkbox"/>
Number of cylinders/Capacity [cm³]														
6/6,728	390/48	<input type="checkbox"/>	<input type="checkbox"/>	<input type="checkbox"/>	<input type="checkbox"/>	<input type="checkbox"/>	<input type="checkbox"/>	<input type="checkbox"/>	<input type="checkbox"/>	<input type="checkbox"/>	<input type="checkbox"/>	<input type="checkbox"/>	<input type="checkbox"/>	<input type="checkbox"/>
6/6,728	390/48	<input type="checkbox"/>	<input type="checkbox"/>	<input type="checkbox"/>	<input type="checkbox"/>	<input type="checkbox"/>	<input type="checkbox"/>	<input type="checkbox"/>	<input type="checkbox"/>	<input type="checkbox"/>	<input type="checkbox"/>	<input type="checkbox"/>	<input type="checkbox"/>	<input type="checkbox"/>
6/6,728	390/48	<input type="checkbox"/>	<input type="checkbox"/>	<input type="checkbox"/>	<input type="checkbox"/>	<input type="checkbox"/>	<input type="checkbox"/>	<input type="checkbox"/>	<input type="checkbox"/>	<input type="checkbox"/>	<input type="checkbox"/>	<input type="checkbox"/>	<input type="checkbox"/>	<input type="checkbox"/>
6/6,728	390/48	<input type="checkbox"/>	<input type="checkbox"/>	<input type="checkbox"/>	<input type="checkbox"/>	<input type="checkbox"/>	<input type="checkbox"/>	<input type="checkbox"/>	<input type="checkbox"/>	<input type="checkbox"/>	<input type="checkbox"/>	<input type="checkbox"/>	<input type="checkbox"/>	<input type="checkbox"/>

All-wheel drive Front axle / Steering

Hydraulic linkage	Integrated front hitch* max. lifting capacity [kg]	Engagement electro-hydraulic with traction management	Active suspended front axle	Steering system/ steering wheel	Steering angle Wheelbase ³ 1.829 mm [°]	Min. turning radius Wheelbase ³ 1.829 mm [m]
Cat III with high-speed tail hook				hydraulic, load-sensing system/ height- and tilt-ad- justable		
<input type="checkbox"/>	5,129	<input type="checkbox"/>	<input type="checkbox"/>	<input type="checkbox"/>	55	6.1
<input type="checkbox"/>	5,129	<input type="checkbox"/>	<input type="checkbox"/>	<input type="checkbox"/>	55	6.1
<input type="checkbox"/>	5,129	<input type="checkbox"/>	<input type="checkbox"/>	<input type="checkbox"/>	55	6.1
<input type="checkbox"/>	5,129	<input type="checkbox"/>	<input type="checkbox"/>	<input type="checkbox"/>	55	6.1

Dimensions

Max. length [mm]

5,467

Min. width [mm]

2,476

Total height [mm]

3,068

Wheelbase [mm]

2,884

Track width front/rear [mm]

1,538 min. – 2,260 max. /

1,530 min. – 2,230 max.



* Depending on country-specific legislative requirements and specifications

¹ ECE R120 complies with ISO 14396 and 97/68EC

² Power Plus is available on the basis of defined prerequisites for transport operations and PTO operation

³ with standard tyres

⁴ other tyres available as special equipment on request (i.e. as cost options)

a partner company of



steyr-traktoren.com
facebook.com/steyrtraktoren
instagram.com/steyr_traktoren

You drive better when you are safe. Before using this vehicle, please read the Operating Manual and become familiar with the use of each of the controls. Note the contents of the instruction panels and use the safety equipment for your own personal safety. This brochure is intended for use internationally. The availability of a few models and of standard and special equipment items may vary from one country to another.

STEYR reserves the right at any time and without prior announcement to make changes to the design and technical version without this in any way obliging STEYR to transfer these to units already sold.

Details, descriptions and pictorial material reflect the current status at the date of publication, but can be amended without prior announcement and at any time. Pictorial materials may show certain national versions, items of special equipment as well as non-complete standard versions.

TP01 / SM / 03.21 / Printed in Austria – Cod. n. 21S0028/INB
www.steyr-traktoren.com

